

F U S E

lighting



ARIZONA SCONCE
9033

SATIN NICKEL WITH SILVERSTONE MICA

© 2000-2020 FUSE LIGHTING.
ALL RIGHTS RESERVED.

DENNIS MILLER ASSOCIATES
200 Lexington Avenue Suite 1210 New York, NY 10016
212.684.0070 Fax.212.684.0776 www.dennismiller.com

ARIZONA SCONCE

17-INCH 9033

HEIGHT: 17" (43.2 CM)

WIDTH: 9" (22.9 CM)

PROJECTION: 6" (15.2 CM)

BACKPLATE: 14" H X 4 1/2" W
(35.6 H X 11.4 W)

WIRING: 1 MEDIUM-BASE SOCKET, 60
WATT MAX.

RECOMMENDED BULB:
CLEAR T-8

J-BOX LOCATION:
7" (17.8) FROM TOP OF FIXTURE

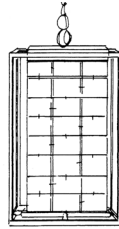
METAL FINISHES

BRUSHED BRASS
LIGHT ANTIQUE BRASS
DARK ANTIQUE BRASS
MATTE BRASS
POLISHED NICKEL
SATIN NICKEL
OIL RUBBED BRONZE
GLOSS WHITE POWDER COAT
MATTE BLACK POWDER COAT
PATINATED STEEL

OPTIONS

AMBER MICA
MOSS MICA
REDWOOD MICA
SILVERSTONE MICA
CAPIZ SQUARES (10% UPCHARGE)

CUSTOM MODIFICATIONS AVAILABLE
FOR OUTDOOR USE



PENDANT
4033
X-4033 (OUTDOOR)

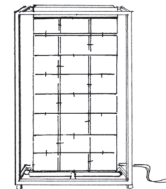
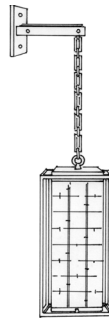
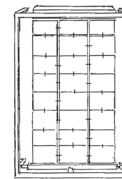


TABLE LAMP
6033



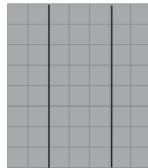
WALL PENDANT
4033 WP
X-4033 WP (OUTDOOR)



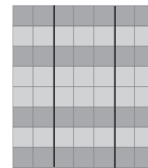
OUTDOOR SCONCE
X-9033

MICA COLORS AND PATTERNS

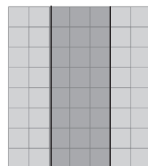
SOLID COLOR #1



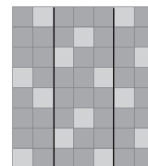
COLOR # 1 WITH COLOR #2 STRIPE



COLOR #1 FRONT WITH COLOR #2 SIDES



COLOR #1 WITH COLOR # 2 DOTS



SCONCES ARE AVAILABLE WITH ONE OR TWO MICA COLORS IN THE ABOVE PATTERNS.
PLEASE INQUIRE FOR CUSTOM PATTERNS.

fuselighting.com

© COPYRIGHT FUSE LIGHTING.
ALL RIGHTS RESERVED.