

BERT | FRANK



SPATE

SPATE WALL LIGHT

A clear nod to Art Deco styling with a soft opal acid-etched stepped glass shade, satin brass metalwork and jewel-like white Carrara or Guatemala marble spheres.



PRODUCT CODE

SPT0020 – Spate Wall Light - Green
SPT0021 – Spate Wall Light - White

MATERIALS

Brass, Glass, Marble stone

FINISHES

Brushed brass lacquered as standard
Guatemalan green or Carrara white marble
Custom finishes available

DIMMING

Mains dimmable / TRIAC as standard
DALI / Bluetooth dimming available

LIGHT SOURCE

Integrated LED - 15.6W 24V 2700K

DRIVER

External LED driver provided
120V/240V 30W

WEIGHT

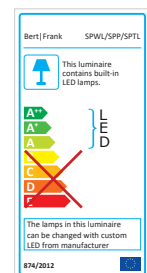
4kg net, 5.2kg gross

WALL PLATE

Brushed brass 88mm wall plate as standard
Brushed brass 4in J-box plate available

DESIGN NOTES

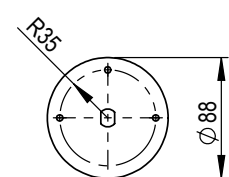
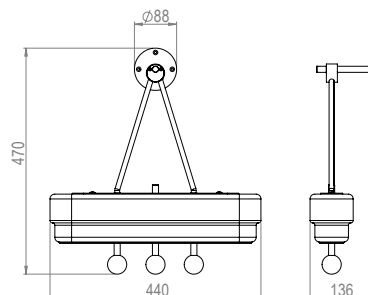
If we owned a private members' club – and we should make it clear we don't – Spate would be very much front of mind. Elegant and modern.



GREEN GUATEMALAN



WHITE CARRARA



WALL PLATE