



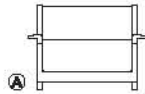
PUNO CHAIR & SOFA

JIUN HO



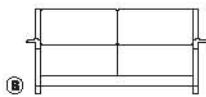
PUNO CHAIR

SF-12-105-A
W 39.5 D 39 H 33 SH 16.5 AH 21
COM: 11 YDS COL: 198 SQ FT

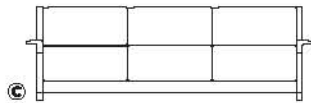


PUNO SOFA

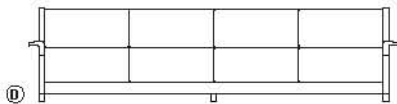
SF-12-105-B
W 61.5 D 39 H 33 SH 16.5 AH 21
COM: 18 YRDS COL: 324 SQ FT



SF-12-105-C
W 87.5 D 39 H 33 SH 16.5 AH 21
COM: 22 YDS COL: 396 SQ FT



SF-12-105-D
W 115.5 D 39 H 33 SH 16.5 AH 21
COM: 26 YDS COL: 468 SQ FT



SHOWN:

ARMS - QUARTER SAWN OAK WITH "CARBON" FINISH
LEGS - QUARTER SAWN OAK WITH "CARBON" FINISH &
STEEL WITH "ESPRESSO" FINISH
FABRIC - PRIMA ALPACA TEXTILES BY SANDRA JORDAN COLLECTION
FRAME - "PUTTY", SEAT & BACK CUSHIONS - "TAUPE"