

BERT FRANK



COLT

FINISHES

The solid brass metalwork is available in Bert Frank's four standard finishes: Brushed Brass, Antique Brass, Dark Bronze, Satin Nickel. The light shades are available in ten different colourways.

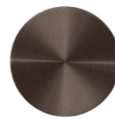
SOLID BRASS METALWORK



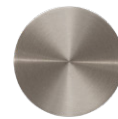
BRUSHED BRASS



ANTIQUE BRASS



DARK BRONZE



SATIN NICKEL

POWDER COAT FINISHES



TEXTURED
CREAM



TEXTURED
BLUE



TEXTURED
GREEN



TEXTURED
OXBLOOD



TEXTURED
BLACK



SATIN WHITE



SATIN DOVE



SATIN MUSTARD



SATIN OLIVE



SATIN BLACK

WALL LIGHT FLUSH



MATERIALS

Brass

FINISHES

Standard finishes listed below
Bespoke finishes available upon request
Metalwork lacquered as standard

DIMMING

Mains dimmable | TRIAC as standard
DALI | requires external driver

LIGHT SOURCE

1 x 15.5 W LED Module | 1450lm | 24V | 2700k

DRIVER

20W LED Integrated driver

DIMENSIONS

H 60mm | W 402mm
H 2.3in | W 15.8in
4.2kg | 2.3lbs

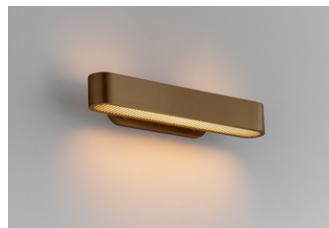
WALL PLATE

H 235mm | W 60mm
H 9.2in | W 2.3in
4in J-box plate available

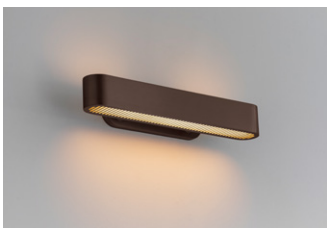
FINISHES



BRUSHED BRASS



ANTIQUE BRASS

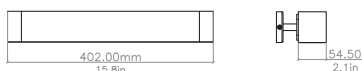


DARK BRONZE



SATIN NICKEL

LINE DRAWINGS



BERT FRANK

+44 (0) 207 164 6482 | sales@bertfrank.co.uk
www.bertfrank.co.uk | 67 Farringdon Road, London EC1M 3JB, UK