

F U S E

lighting



CAMBRIDGE SCONCE  
9058

SATIN NICKEL WITH CLEAR CRACKLED GLASS

© 2000-2020 FUSE LIGHTING.  
ALL RIGHTS RESERVED.

# CAMBRIDGE SCONCE

## 9058

HEIGHT: 12" (30.5 CM)

WIDTH: 7 1/2" (19.1 CM)

PROJECTION: 8 1/2" (21.6 CM)

BACKPLATE: 12" H X 4 3/4" W  
(30.5 H X 12.1 W)

WIRING: 1 MEDIUM-BASE SOCKET,  
60 WATT MAX.

RECOMMENDED BULB: 60 WATT  
EDISON STYLE 'SQUIRREL CAGE' BULB

### METAL FINISHES

LIGHT ANTIQUE BRASS

DARK ANTIQUE BRASS

POLISHED NICKEL

SATIN NICKEL

OIL RUBBED BRONZE

GLOSS WHITE POWDER COAT

MATTE BLACK POWDER COAT

PATINATED STEEL

### GLASS SHADE

**COLOR** (CHOOSE ONE)

CLEAR

BLUE

CERULEAN

SMOKE

**TEXTURE** (CHOOSE ONE)

SMOOTH

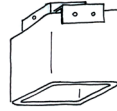
CRACKLED

FROSTED (INSIDE)

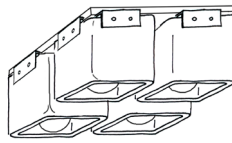
### NOTES:

ALL SHADES ARE HAND-BLOWN AND  
WILL VARY IN SIZE AND THICKNESS.

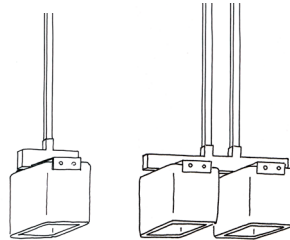
FROSTED FINISH WILL LIGHTEN COLOR



SINGLE CEILING MOUNT  
**8058A**  
**X-8058** (OUTDOOR)

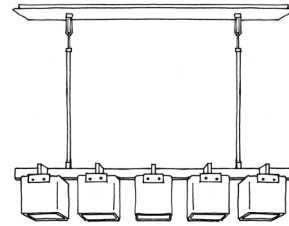


4-LIGHT CEILING MOUNT  
**8058D**



SINGLE PENDANT  
**4058A**

DOUBLE PENDANT  
**4058B**

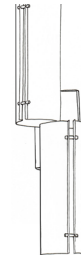


4, 5 & 6 LIGHT CHANDELIER

**5058A** (4 LIGHT CHANDELIER)

**5058B** (5 LIGHT CHANDELIER)

**5058C** (6 LIGHT CHANDELIER)



QUAD CHANDELIER  
**5058D**



SCONCE  
**X-9058** (OUTDOOR)

fuselighting.com

© COPYRIGHT FUSE LIGHTING.  
ALL RIGHTS RESERVED.