

CALICO platter

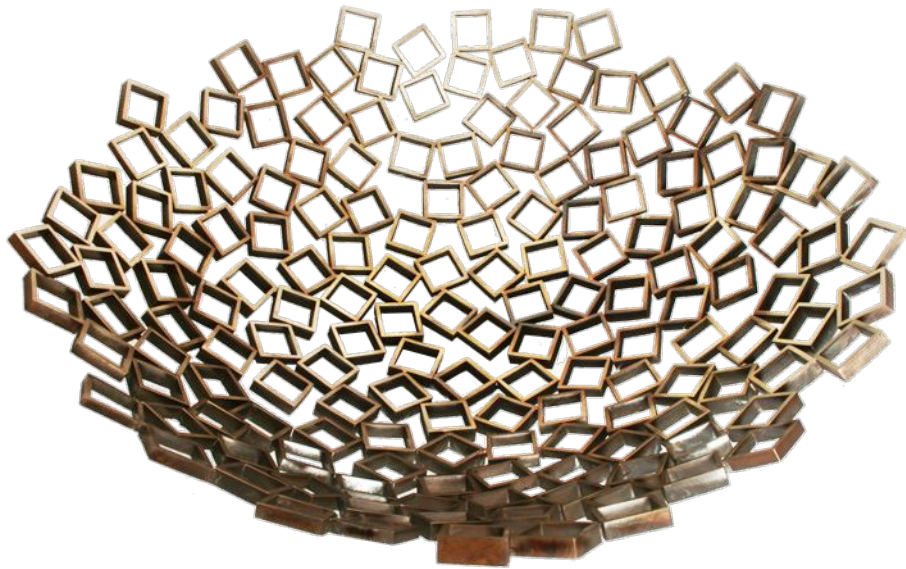
Fabricated from individual pieces of bronze silver brazed, and given a two tone patina.

This piece can be custom made to other configurations, or adapted to a wall piece.

Dimensions: 20" x 20"

Material: Bronze

Weight: 11 lbs



CALICO bowl

Fabricated from individual pieces of bronze, silver brazed, and given a two tone patina. This piece is also made in a large platter and can be custom made to other configurations, or adapted to a wall piece.

Dimensions: 20" x 20"

Material: Bronze

Weight: 11 lbs



MIKADO dish

This piece, fabricated from bronze, is light and airy and bright. It suits a wide variety of decors by being true to its elements.

Dimensions::24" x 24" x 3"

Material: Bronze

Weight: 11 lbs.

C T E R U E N

STEPHEN
SERA
STUDIO



Mojave bowl

This Bowl is fabricated from hand cut squares of bronze and joined by silver. It is a very functional piece which gets more beautiful as its contents disappear.

Dimensions: 21" x 21"

Material: Bronze

Weight: 12 lbs.

www.stephensera.com



St. Michel bowl

This Bowl, or tray, is a liberator of form, the seemingly random planes defining a space in perfect harmony. Its squares of blackened steel resemble slate, and play with light in a similar way. It improves with the proper fruit.

Dimensions: 18" x 18" x 3"

Material: Steel

Weight: 9 lbs.



MONDRIAN bowl

This Bowl, a subtle homage to the geometric forms of the Dutch Master, provides endless opportunity for distraction with the interplay of its shapes.

Dimensions: 18" x 36" x 6"

Material: Bronze

Weight: 18 lbs.



HORIZON Tray

This Large piece is formed from a sheet of .25" Bronze and is timeless. It slides easily into any decor with its combination of classic material and elegant form.

Dimensions: 24" x 24" x 3"

Material: Bronze

Weight 34 lbs.



ODYSSEY Tray

This Large piece is formed from .25" Stainless Steel and in a semi matte finish. The feet can be of many materials from stone to wood to metal.

Dimensions: 54" x 16" x 6"

Material: Stainless Steel

Weight 44 lbs.



EROS Bowl

This Bowl, fabricated from hand cut squares and joined by silver, is light and elegant. It has a very friendly feeling, with a bright finish.

Dimensions: 18" x 18" x 5"

Material: Bronze

Weight: 8 lbs.



THORN platter

This large and weighty piece makes a fine statement on a large table. Its low profile belies its solid presence.

Dimensions: 24" x 24" x 4"

Material: Bronze

Weight: 22 lbs.



THORN Bowl

This Bowl offers a dramatic counterpoint to any environment. It is heavy in weight, but light in spirit.

Dimensions: 18" x 18" x 5"

Material: Bronze

Weight 18 lbs.



PAN platter

This piece is composed of hand cut squares and joined with silver. It is large and commanding, with the authority of its elements.

Dimensions: 28" x 28" x 4"

Material: Bronze



SWAN Vase

This graceful form is appealing with no need for assistance. It is hand formed from sheet bronze and silver brazed, then given a dark patina with bright highlights.

Height: 22" and larger (Scalable)



PHARAOH Bowl

Hollow formed from flat sheet and given a dark patina with bright highlights.

Dimensions: 24" x 24" x 5"

Material: Bronze

Weight: 16 lbs.



PHARAOH Bowl Classisal

Hollow formed from flat sheet and given a Classical Verdigris patina with bright highlights and hand formed ball feet..

Dimensions: 24" x 24" x 7"

Material: Bronze

Weight: 16 lbs.



OPALvase

Machined from a solid block of Magnesium alloy, this vase defies expectation with its concealed well of water and peek-a-boo center. It is a perfect enhancement to nature's most beautiful ornament.

Diameter: 11 "

Weight 4 lbs.

STEPHEN
SERA



OPALcandle

Machined from solid blocks of Magnesium alloy, these candle holder are part of a series of soft circular forms that draw attention without dominating a table setting.

Diameter: 4.5 "
Weight 10 oz.

www.stephensera.com



LEVANT sculpture

Dimensions: 8" x 8" x 30"

Materials: Bronze, Steel

Weight: 28 lbs.



METROPOLIS sculpture

A piece of art with highly decorative attraction, this sculpture is fabricated from bronze, with a bright finish.

Dimensions: 8" x 8" x 30"

Materials: Bronze, Granite base

Weight: 28 lbs.



COCO sculpture

Fabricated from individual pieces of bronze, this is an ornamental piece with a whimsical charm.

Equally at home in any room or environment.

Dimensions: 7" x 14"

Material: Bronze

Weight: 8 lbs



SOLARIS sculpture

This sculpture is fabricated from
Cor-ten steel..

It can be scaled to any size, and
it can be produced in a wide
range of materials and finishes .

Dimensions: 22" x 22" x 84"

*Pricing on request depending on
variables.*



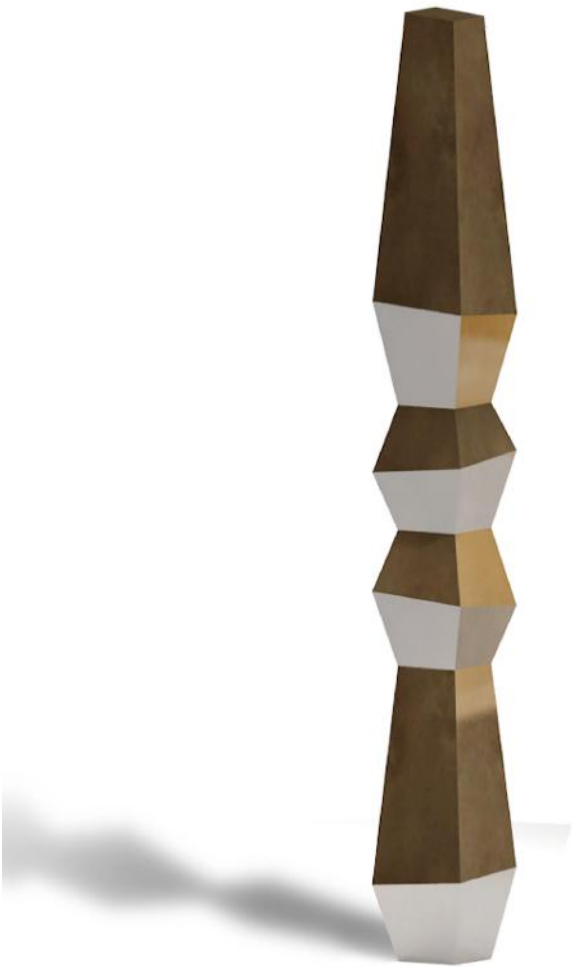
ORION sculpture

This sculpture can be fabricated from bronze, or steel. A wide variety of Stone colors and finishes is available.

It can be scaled to any size.

Dimensions: 22" x 22" x 84"

Pricing on request depending on variables.



NEXUS sculpture

This sculpture can be fabricated
from bronze, or steel.

It can be scaled to any size, and
it can be produced in a wide
range of finishes .

Dimensions: 22" x 22" x 84"

*Pricing on request depending on
variables.*



SOLSTICE sculpture

This sculpture in Bronze with granite base, is an iconic form, deconstructed.

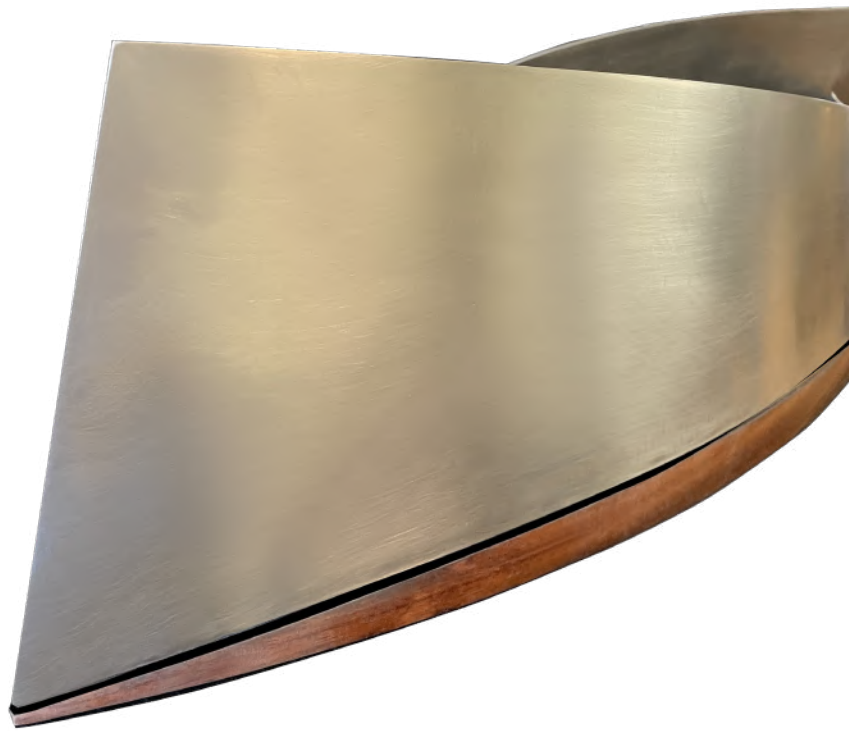
It can be scaled to any size.

Dimensions: Vary

Pricing (as shown). 18": \$2200. 24": \$2600.

www.stephensera.com

STEPHEN
SERA
STUDIO



This Floral centerpiece mates perfectly with the Odessey Tray.
Stainless Steel and Exotic wood pairs in harmony with its form.

38" x 7" x 9"

www.stephensera.com



THORN sculpture

Fabricated from individual pieces of bronze, silver brazed, with a duo-tone patina and mounted to a steel base. This piece can be configured to a wide range of sizes and configurations, including wall mounting or other creative applications.

Dimensions: 14" x 28"

Material: Bronze

Weight: 18 lbs