

F U S E
lighting



STOCKHOLM SCONCE
9087

PATINATED BRONZE

STOCKHOLM SCONCE

DENNIS MILLER ASSOCIATES

200 Lexington Avenue Suite 1210 New York, NY 10016
212.684.0070 Fax.212.684.0776 www.dennismiller.com

9087

HEIGHT: 14" (35.5 CM)

WIDTH: 7" (17.8 CM)

PROJECTION: 4" (10.2 CM)

BACKPLATE: 4 1/4 DIA (10.8 CM)

WEIGHT: 7.5 LBS

WIRING: DIMMABLE 4 W LED 2700 K,
90+ CRI

J-BOX LOCATION: APPROX. 7"
(17.8CM) FROM TOP OF FIXTURE

ADA COMPLIANT

METAL FINISHES

PATINATED BRONZE

BRUSHED BRASS

LIGHT ANTIQUE BRASS

DARK ANTIQUE BRASS

POLISHED NICKEL

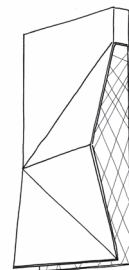
SATIN NICKEL

OIL RUBBED BRONZE

GLOSS WHITE POWDER COAT

MATTE BLACK POWDER COAT

PATINATED STEEL



SCONCE

X-9087 (OUTDOOR)

fuselighting.com

© COPYRIGHT FUSE LIGHTING.
ALL RIGHTS RESERVED.