



ROULETTE EXTENSION TABLE

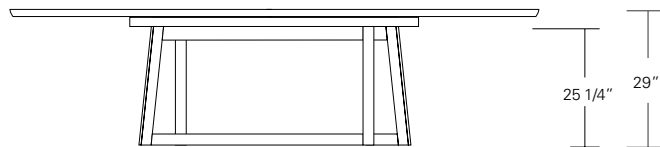
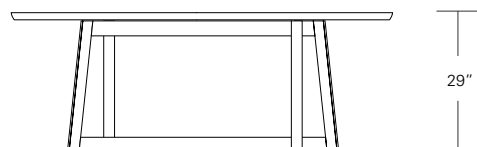
**84W x 40D x 29H
(120W with two 18" LEAVES)**

Shown in Bronze Ash.

The Roulette Table base has an elongated pinwheel layout with slanted legs at the corners expressing both movement and balance. Profiled legs and table edges add a softened tactile quality to the design. Roulettes are available in fixed and extension versions, in a variety of shapes and sizes.

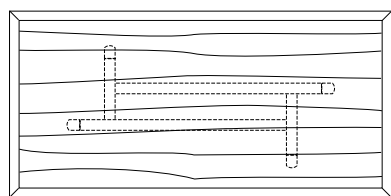


ROULETTE TABLE

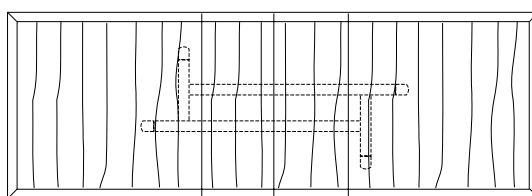


72", 84", 96", 108" or 120"

104", 120", 132", 144" or 156"
16 or 18" 16 or 18"



38", 40", 42",
44" or 48"



Roulette Table

- 72"W x 38"D x 29"H
- 84"W x 40"D x 29"H
- 96"W x 42"D x 29"H
- 108"W x 44"D x 29"H
- 120"W x 48"D x 29"H

Roulette Extension Table

- 72"W (104"w/two 16"leaves) x 38"D x 29"H
- 84"W (120"w/two 18"leaves) x 40"D x 29"H
- 96"W (132"w/two 18"leaves) x 42"D x 29"H
- 108"W (144"w/two 18"leaves) x 44"D x 29"H
- 120"W (156"w/two 18"leaves) x 48"D x 29"H

DESCRIPTION		FINISH OPTIONS		
<p>Roulette Table: Veneer top with solid wood edge. Solid wood base with levelers.</p> <p>Standard Options: Solid wood top (non-extension table only). Reverse diamond or diamond veneer pattern.</p> <p>Custom Orders: Custom sizes, woods, veneer patterns and finishes are available. Please request a price quotation.</p>	Standard Finishes	NATURAL	STAINED	CERUSED
		Ash, Cherry, Mahogany, Maple, Walnut, Claro Toned Walnut, Oak.* *At additional cost.	Bronze Ash, Burnt Ash, Ebonized Ash, Grey Ash, Medium Cherry, Dark Cherry, Medium Mahogany, Ebonized Walnut, Medium Walnut, Dark Walnut, Grey Walnut, Silver Walnut.	Bleached Ash, Cerused Ash, Cerused Bronze Ash, Cerused Burnt Ash, Cerused Mahogany, Cerused Dark Mahogany, Cerused Oak*, Bleached Walnut, Cerused Walnut, Cerused Grey Walnut, Cerused Silver Walnut.