

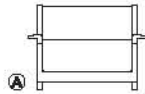


# JIUN HO



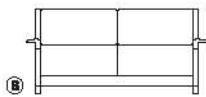
## PUNO CHAIR

**SF-12-105-A**  
W 39.5 D 39 H 33 SH 16.5 AH 21  
COM: 11 YDS COL: 198 SQ FT

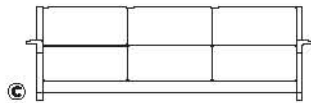


## PUNO SOFA

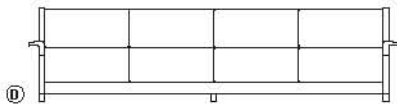
**SF-12-105-B**  
W 61.5 D 39 H 33 SH 16.5 AH 21  
COM: 18 YRDS COL: 324 SQ FT



**SF-12-105-C**  
W 87.5 D 39 H 33 SH 16.5 AH 21  
COM: 22 YDS COL: 396 SQ FT



**SF-12-105-D**  
W 115.5 D 39 H 33 SH 16.5 AH 21  
COM: 26 YDS COL: 468 SQ FT



## SHOWN:

ARMS - QUARTER SAWN OAK WITH "CARBON" FINISH  
LEGS - QUARTER SAWN OAK WITH "CARBON" FINISH &  
STEEL WITH "ESPRESSO" FINISH

FABRIC - PRIMA ALPACA TEXTILES BY SANDRA JORDAN COLLECTION  
FRAME - "PUTTY", SEAT & BACK CUSHIONS - "TAUPE"