





NIGHTSTANDS

These trim and useful cases offer straightforward function for the bedroom or anywhere. The vertically integrated pull has a pleasing and purposeful grip designed to accommodate thumb and fingers. This handle appears to peel back the façade to reveal alternating grain direction.

Available with two or three drawers, left or right facing, free-standing or wall-mounted.

Handcrafted in California.

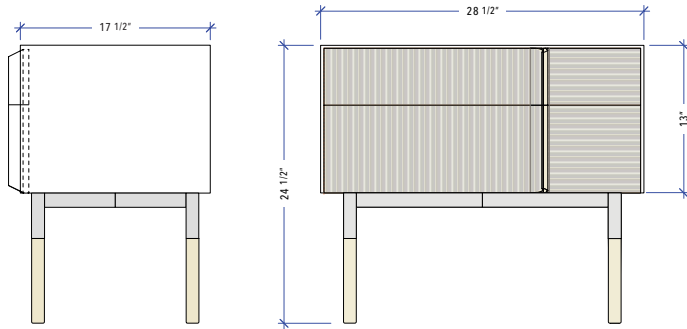
STYLES

Style A: Wood overall with metal leg armature. Body & drawer face.
Style B: Wood body with painted lacquer drawer face(s) & metal leg armature.
Style C: Painted lacquer overall with metal leg armature. Body & drawer face(s).
Style D: Painted lacquer body with wood drawer face(s) & metal leg armature.
*French cleat is included for wall hanging.

Materials/Finishes options

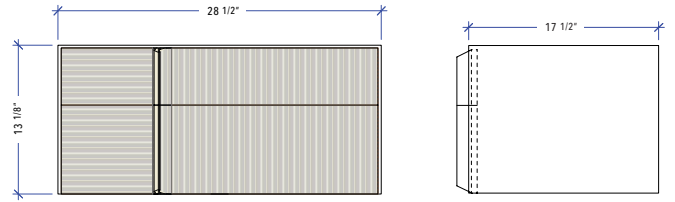
Metal Leg Armature Available in TB standard powder-coat finishes
Case + Legs available in all TB standard wood and painted finishes.

DIMENSIONS



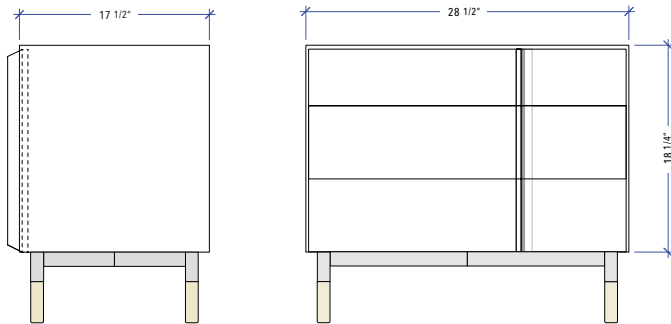
2 Drawer / Freestanding

24"W x 17.5"D x 24.5"H
 28.5"W x 17.5"D x 24.5"H
 32"W x 17.5"D x 24.5"H



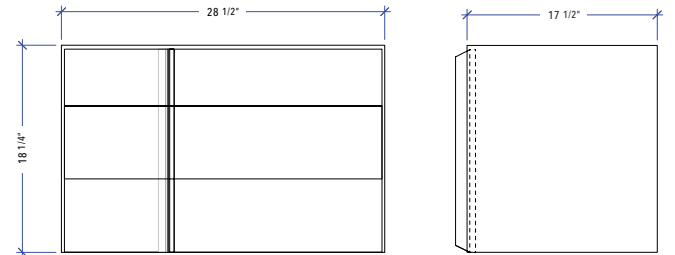
2 Drawer / Wall-Mounted

24"W x 17.5"D x 13"H
 28.5"W x 17.5"D x 13"H
 32"W x 17.5"D x 13"H



3 Drawer / Freestanding

24"W x 17.5"D x 24.5"H
 28.5"W x 17.5"D x 24.5"H
 32"W x 17.5"D x 24.5"H



3 Drawer / Wall-Mounted

24"W x 17.5"D x 18"H
 28.5"W x 17.5"D x 18"H
 32"W x 17.5"D x 18"H