

F U S E

lighting



CAMBRIDGE CHANDELIER
5058

OIL RUBBED BRONZE WITH CLEAR CRACKLED GLASS

© 2000-2020 FUSE LIGHTING.
ALL RIGHTS RESERVED.

DENNIS MILLER ASSOCIATES
200 Lexington Avenue Suite 1210 New York, NY 10016
212.684.0070 Fax.212.684.0776 www.dennismiller.com

CAMBRIDGE CHANDELIER

4-LIGHT

5058A

HEIGHT: 9" (22.9 CM)

WIDTH: 41" (104.1 CM)

DEPTH: 7 1/2" (19.0 CM)

STEM: 29" STANDARD (73.7 CM)

OAH: 38" (96.5 CM)

CEILING CANOPY: 39" W X 4 3/4" D
(99.1 W X 12.1 D)

WEIGHT: APPROX. 60 LBS.

WIRING: 4 MEDIUM-BASE SOCKETS,
60 WATT MAX. EACH

RECOMMENDED BULB: 60 WATT
EDISON STYLE 'SQUIRREL CAGE' BULB

5-LIGHT

5058B

HEIGHT: 9" (22.9 CM)

WIDTH: 51 1/2" (130.8 CM)

DEPTH: 7 1/2" (19.0 CM)

STEM: 29" STANDARD (73.7 CM)

OAH: 38" (96.5 CM)

CEILING CANOPY: 50" W X 4 3/4" D
(127.0 W X 12.1 D)

WEIGHT: APPROX. 70 LBS.

WIRING: 5 MEDIUM-BASE SOCKETS,
60 WATT MAX. EACH

RECOMMENDED BULB: 60 WATT
EDISON STYLE 'SQUIRREL CAGE' BULB

6-LIGHT

5058C

HEIGHT: 9" (22.9 CM)

WIDTH: 62" (157.5 CM)

DEPTH: 7 1/2" (19.0 CM)

STEM: 29" STANDARD (73.7 CM)

OAH: 38" (96.5 CM)

CEILING CANOPY: 60" W X 4 3/4" D
(152.4 W X 12.1 D)

WEIGHT: APPROX. 80 LBS.

WIRING: 6 MEDIUM-BASE SOCKETS,
60 WATT MAX. EACH

RECOMMENDED BULB: 60 WATT
EDISON STYLE 'SQUIRREL CAGE' BULB

METAL FINISHES

LIGHT ANTIQUE BRASS

DARK ANTIQUE BRASS

POLISHED NICKEL

SATIN NICKEL

OIL RUBBED BRONZE

GLOSS WHITE POWDER COAT

MATTE BLACK POWDER COAT

PATINATED STEEL

GLASS SHADE

COLOR (CHOOSE ONE)

CLEAR

BLUE

CERULEAN

SMOKE

TEXTURE (CHOOSE ONE)

SMOOTH

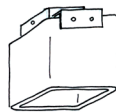
CRACKLED

FROSTED (INSIDE)

NOTES:

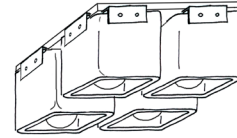
ALL SHADES ARE HAND-BLOWN AND
WILL VARY IN SIZE AND THICKNESS.

FROSTED FINISH WILL LIGHTEN COLOR

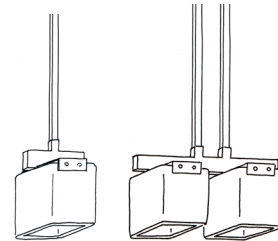


SINGLE CEILING MOUNT
8058A

X-8058 (OUTDOOR)

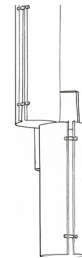


4-LIGHT CEILING MOUNT
8058D



SINGLE PENDANT
4058A

DOUBLE PENDANT
4058B



QUAD CHANDELIER
5058D



SCONCE
9058
X-9058 (OUTDOOR)

fuselighting.com

© COPYRIGHT FUSE LIGHTING.
ALL RIGHTS RESERVED.